



Caleb Caleb Swift

États-Unis

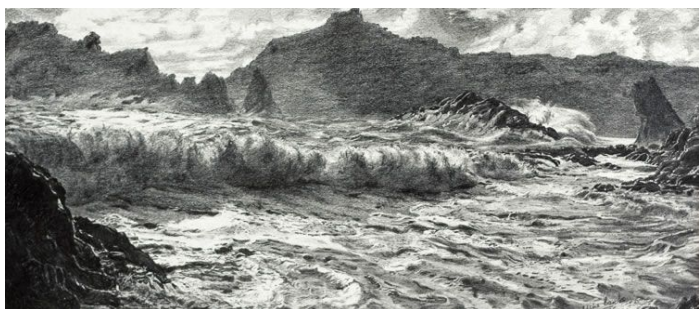
Duet Suite for Violin and Violoncello II. Fugue (Op.6)

A propos de l'artiste

I am a composer with a love for writing orchestral pieces, however I do write some chamber pieces here and there. I am an admirer of John Williams and James Horner whose music basically defines my tastes. I sometimes give little nods to them every once and a while in my pieces. To keep my music interesting, I'm always writing with the uses of intense dissonance and consonance, textures and motifs.

Page artiste : https://www.free-scores.com/partitions_gratuites_americancomposer1.htm

A propos de la pièce



Titre :	Duet Suite for Violin and Violoncello II. Fugue [Op.6]
Compositeur :	Caleb Swift, Caleb
Droit d'auteur :	Creative Commons Licence
Instrumentation :	Violon, Violoncelle
Style :	Classique moderne

Caleb Caleb Swift sur [free-scores.com](https://www.free-scores.com)



Cette partition ne fait pas partie du domaine public. Merci de contacter l'artiste pour toute utilisation hors du cadre privé.



- écouter l'audio
- partager votre interprétation
- commenter la partition
- contacter l'artiste

Duet Suite for Violin and Cello

II. Fugue

Caleb Swift

Andante

"stately"

Violin *f* *"stately"*

Violoncello *f*

Vln. *f*

Vlc. *mf*

Vln. *f* *"stately"*

Vlc. *f*

Vln. *f*

Vlc. *f*

Vln. *f*

Vlc. *f*

15

Vln.

Vlc.

Rit.

The image shows a musical score for Violin (Vln.) and Viola (Vlc.) parts, measures 15 through 18. The key signature is one sharp (F#). The Violin part (top staff) begins with a treble clef and a sharp sign. Measure 15 contains a quarter note G4, an eighth note A4, a quarter note B4, and a quarter note C5. Measure 16 contains a quarter note D5, a quarter note E5, a quarter note F#5, and a quarter note G5. Measure 17 contains a quarter note A5, a quarter note B5, a quarter note C6, and a quarter note D6. Measure 18 contains a quarter note E6, a quarter note F#6, a quarter note G6, and a quarter note A6. The Viola part (bottom staff) begins with a bass clef and a sharp sign. Measure 15 contains a quarter note G3, a quarter note F#3, and a quarter note E3. Measure 16 contains a quarter note D3, a quarter note C3, a quarter note B2, and a quarter note A2. Measure 17 contains a quarter note G2, a quarter note F#2, a quarter note E2, and a quarter note D2. Measure 18 contains a quarter note C2, a quarter note B1, a quarter note A1, and a quarter note G1. The word "Rit." is written above the Violin staff in measure 18. The score ends with a double bar line.