

# THE SEASONS

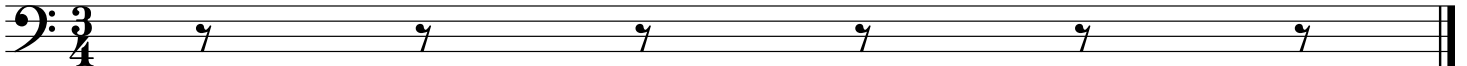
APRIL

(SNOWDROP)

Arranged for  
Solo - Cello

TCHAIKOVSKY

*J&H*



# April

Moderato

(Snowdrop)

Tchaikovsky

First staff of music, bass clef, 3/4 time signature, key of D major. It begins with a half note D2, followed by quarter notes E2, F#2, G2, A2, B2, C3, D3, E3, F#3, G3, A3, B3, C4, D4.

Second staff of music, bass clef, key of D major. It begins with a half note D2, followed by quarter notes E2, F#2, G2, A2, B2, C3, D3, E3, F#3, G3, A3, B3, C4, D4.

Third staff of music, bass clef, key of D major. It begins with a half note D2, followed by quarter notes E2, F#2, G2, A2, B2, C3, D3, E3, F#3, G3, A3, B3, C4, D4.

Fourth staff of music, bass clef, key of D major. It begins with a half note D2, followed by quarter notes E2, F#2, G2, A2, B2, C3, D3, E3, F#3, G3, A3, B3, C4, D4.

Fifth staff of music, bass clef, key of D major. It begins with a half note D2, followed by quarter notes E2, F#2, G2, A2, B2, C3, D3, E3, F#3, G3, A3, B3, C4, D4.

Sixth staff of music, bass clef, key of D major. It begins with a half note D2, followed by quarter notes E2, F#2, G2, A2, B2, C3, D3, E3, F#3, G3, A3, B3, C4, D4. The staff concludes with a triplet of eighth notes: B3, A3, G3.

Allegretto

3

Seventh staff of music, bass clef, key of D major. It begins with a half note D2, followed by quarter notes E2, F#2, G2, A2, B2, C3, D3, E3, F#3, G3, A3, B3, C4, D4. The staff features a triplet of eighth notes: B3, A3, G3.

Eighth staff of music, bass clef, key of D major. It begins with a half note D2, followed by quarter notes E2, F#2, G2, A2, B2, C3, D3, E3, F#3, G3, A3, B3, C4, D4. The staff features a triplet of eighth notes: B3, A3, G3.

Ninth staff of music, bass clef, key of D major. It begins with a half note D2, followed by quarter notes E2, F#2, G2, A2, B2, C3, D3, E3, F#3, G3, A3, B3, C4, D4. The staff features a triplet of eighth notes: B3, A3, G3.

Moderato

Tenth staff of music, bass clef, key of D major. It begins with a half note D2, followed by quarter notes E2, F#2, G2, A2, B2, C3, D3, E3, F#3, G3, A3, B3, C4, D4. The staff features a triplet of eighth notes: B3, A3, G3.

