



Bernard Dewagtere

France, SIN LE NOBLE

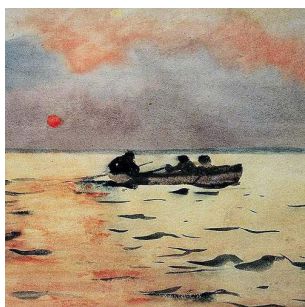
Michael Row the Boat Ashore

A propos de l'artiste

Docteur en musicologie, chef d'orchestre et compositeur.
Compositions et arrangements de toutes époques, dans tous les styles ou genres musicaux et pour n'importe quelles formations instrumentales ou vocales.

Qualification : Docteur en Musicologie
Sociétaire : SACEM - Code IPI artiste : 342990
Page artiste : https://www.free-scores.com/partitions_gratuites_bernard-dewagtere.htm

A propos de la pièce



Titre : Michael Row the Boat Ashore
Compositeur : Traditional
Droit d'auteur : Public Domain
Editeur : Dewagtere, Bernard
Instrumentation : Mandoline
Style : Gospel

Bernard Dewagtere sur [free-scores.com](https://www.free-scores.com)

LICENCE

Cette partition nécessite une autorisation :
- pour les représentations publiques
- pour l'utilisation par les professeurs

S'acquies de cette licence sur :
<https://www.free-scores.com/licence?p=a43qhSwIAL>



- écouter l'audio
- partager votre interprétation
- commenter la partition
- s'acquies de la licence
- contacter l'artiste

Interdiction de diffusion sur d'autres sites Web.

Michael Row the Boat Ashore

Afro-American spiritual (1867)

$\text{♩} = 70$

Mandolin

Mandolin tablature for measures 1-5. The treble clef staff shows the melody in G major. The bass clef staff shows the fret numbers for the left hand. Measure 1 starts with a whole rest on the treble staff and a fret number of 3 on the bass staff. Measure 2 contains a first ending bracket over measures 2 and 3. Measure 3 contains a second ending bracket over measures 4 and 5. The tablature for measure 1 is 3 0. For measure 2, it is 3 0 3 5 3. For measure 3, it is 0 3. For measure 4, it is 5 3. For measure 5, it is 0 3.

Mandolin tablature for measures 6-11. The treble clef staff shows the melody in G major. The bass clef staff shows the fret numbers for the left hand. Measure 6 starts with a fret number of 6 on the bass staff. Measure 7 contains a first ending bracket over measures 7 and 8. Measure 8 contains a second ending bracket over measures 9 and 10. Measure 11 ends with a key signature change to A major. The tablature for measure 6 is 3 0 1 0 5. For measure 7, it is 3 5. For measure 8, it is 0 5 3. For measure 9, it is 3 0. For measure 10, it is 0 5 3. For measure 11, it is 3 5 2.

Mandolin tablature for measures 12-17. The treble clef staff shows the melody in A major. The bass clef staff shows the fret numbers for the left hand. Measure 12 starts with a fret number of 12 on the bass staff. Measure 13 contains a first ending bracket over measures 13 and 14. Measure 14 contains a second ending bracket over measures 15 and 16. Measure 17 ends with a fret number of 5 on the bass staff. The tablature for measure 12 is 5 2 5 5. For measure 13, it is 2 5. For measure 14, it is 0 5. For measure 15, it is 2 5. For measure 16, it is 5 2 3 2 0. For measure 17, it is 5 0.

Mandolin tablature for measures 18-23. The treble clef staff shows the melody in A major. The bass clef staff shows the fret numbers for the left hand. Measure 18 starts with a fret number of 18 on the bass staff. Measure 19 contains a first ending bracket over measures 19 and 20. Measure 20 contains a second ending bracket over measures 21 and 22. Measure 23 ends with a double bar line. The tablature for measure 18 is 2 0 5. For measure 19, it is 5 2. For measure 20, it is 2 5 3. For measure 21, it is 2 5. For measure 22, it is 3.

©2019Dewagtere