



Bernard Dewagtere

France, SIN LE NOBLE

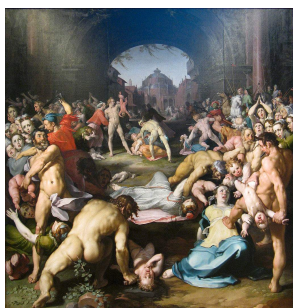
The Coventry Carol (Lullay, Thou little tiny Child) Traditional

A propos de l'artiste

Docteur en musicologie, chef d'orchestre et compositeur.
Compositions et arrangements de toutes époques, dans tous les styles ou genres musicaux et pour n'importe quelles formations instrumentales ou vocales.

Qualification : Docteur en Musicologie
Sociétaire : SACEM - Code IPI artiste : 342990
Page artiste : https://www.free-scores.com/partitions_gratuites_bernard-dewagtere.htm

A propos de la pièce



Titre : The Coventry Carol
[Lullay, Thou little tiny Child]
Compositeur : Traditional
Arrangeur : Dewagtere, Bernard
Droit d'auteur : Copyright © Bernard Dewagtere
Editeur : Dewagtere, Bernard
Instrumentation : Vibraphone ou Marimba ou Xylophone, piano ou orgue
Style : Noel
Commentaire : The Coventry Carol is an English Christmas carol dating from the 16th century. The carol was traditionally performed in Coventry in England as part of a mystery play called The Pageant of the Shearmen and Tailors. The play depicts the Christmas story from chapter two in the Gospel of Matthew: the carol itself refers to the Massacre of the Innocents, in which Herod ordered all male infants under the age of two in Bethlehem to be killed, and take... (la suite en ligne)

Bernard Dewagtere sur [free-scores.com](https://www.free-scores.com)

LICENCE

Cette partition nécessite une autorisation :
- pour les représentations publiques
- pour l'utilisation par les professeurs

S'acquitter de cette licence sur :

<https://www.free-scores.com/licence?p=aafhG0eH0m>



- écouter l'audio
- partager votre interprétation
- commenter la partition
- s'acquitter de la licence
- contacter l'artiste

Interdiction de diffusion sur d'autres sites Web.

The Coventry Carol

Lullay, Thou little tiny Child

Old English Carol (16th Century)

Arr. : Bernard Dewagtere

Vibraphone

Piano

pp

This system contains the first six measures of the piece. The Vibraphone part consists of six whole rests. The Piano part is in 3/4 time with a key signature of two flats. The right hand plays chords, and the left hand plays a simple bass line. The dynamic marking *pp* is present in the first measure.

Vib.

Pno

This system contains measures 7 through 12. The Vibraphone part has six whole rests. The Piano part continues with chords and a bass line. Measure 12 ends with a repeat sign.

Vib.

Pno

13

p

This system contains measures 13 through 18. The Vibraphone part has six whole rests. The Piano part continues with chords and a bass line. Measure 13 starts with a dynamic marking of *p*. Measure 18 ends with a repeat sign.

The Coventry Carol

2
19

Vib.

Pno

25

Vib.

Pno

31

Vib.

Pno

mp

37

Vib.

Pno

The Coventry Carol

43 *mf*

Vib.

Pno

mf

Detailed description: This system covers measures 43 to 48. The vibraphone part (top staff) begins with a treble clef, a key signature of one flat, and a common time signature. It features a melodic line with eighth and sixteenth notes, including a triplet of eighth notes in measure 45. The piano accompaniment (bottom two staves) uses a grand staff with treble and bass clefs. It provides harmonic support with chords and moving lines in both hands. A dynamic marking of *mf* (mezzo-forte) is placed above the piano part in measure 45.

49

Vib.

Pno

Detailed description: This system covers measures 49 to 54. The vibraphone part continues with a melodic line, featuring a triplet of eighth notes in measure 51. The piano accompaniment provides harmonic support with chords and moving lines in both hands. The key signature remains one flat.

55

Vib.

Pno

Detailed description: This system covers measures 55 to 60. The vibraphone part continues with a melodic line, featuring a triplet of eighth notes in measure 57. The piano accompaniment provides harmonic support with chords and moving lines in both hands. The key signature remains one flat.

61 *f*

Vib.

Pno

f

Detailed description: This system covers measures 61 to 66. The vibraphone part continues with a melodic line, featuring a triplet of eighth notes in measure 63. The piano accompaniment provides harmonic support with chords and moving lines in both hands. A dynamic marking of *f* (forte) is placed above the piano part in measure 61.

The Coventry Carol

4
67

Vib.

Pno

73

Vib.

Pno

pp

79

Vib.

Pno

85

Vib.

Pno

rit.