



Bernard Dewagtere

France, SIN LE NOBLE

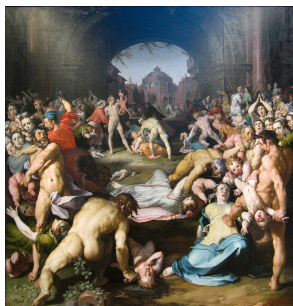
The Coventry Carol (Lullay, Thou little tiny Child) Traditional

A propos de l'artiste

Docteur en musicologie, chef d'orchestre et compositeur.
Compositions et arrangements de toutes époques, dans tous les styles ou genres musicaux et pour n'importe quelles formations instrumentales ou vocales.

Qualification : Docteur en Musicologie
Sociétaire : SACEM - Code IPI artiste : 342990
Page artiste : https://www.free-scores.com/partitions_gratuites_bernard-dewagtere.htm

A propos de la pièce



Titre : The Coventry Carol
[Lullay, Thou little tiny Child]
Compositeur : Traditional
Arrangeur : Dewagtere, Bernard
Droit d'auteur : Copyright © Bernard Dewagtere
Editeur : Dewagtere, Bernard
Instrumentation : Trombone ou tuba ou euphonium, piano ou orgue
Style : Noel
Commentaire : The Coventry Carol is an English Christmas carol dating from the 16th century. The carol was traditionally performed in Coventry in England as part of a mystery play called The Pageant of the Shearmen and Tailors. The play depicts the Christmas story from chapter two in the Gospel of Matthew: the carol itself refers to the Massacre of the Innocents, in which Herod ordered all male infants under the age of two in Bethlehem to be killed, and take... (la suite en ligne)

Bernard Dewagtere sur [free-scores.com](https://www.free-scores.com)

LICENCE

Cette partition nécessite une autorisation :
- pour les représentations publiques
- pour l'utilisation par les professeurs

S'acquitter de cette licence sur :

<https://www.free-scores.com/licence?p=a5Si9wXsvh>



- écouter l'audio
- partager votre interprétation
- commenter la partition
- s'acquitter de la licence
- contacter l'artiste

Interdiction de diffusion sur d'autres sites Web.

The Coventry Carol

Lullay, Thou little tiny Child

Old English Carol (16th Century)

Arr. : Bernard Dewagtere

Trombone

Piano

pp

This system contains the first six measures of the score. The Trombone part is in the bass clef with a 3/4 time signature and contains six whole rests. The Piano part is in the treble and bass clefs with a 3/4 time signature and a key signature of two flats. It begins with a piano (*pp*) dynamic. The right hand plays chords, and the left hand plays a simple bass line.

Trb.

Pno

7

This system contains measures 7 through 12. The Trb. part has six whole rests. The Pno part continues with chords and a bass line. Measure 12 ends with a repeat sign.

Trb.

Pno

13

p

This system contains measures 13 through 18. The Trb. part has six whole rests until measure 14, where it begins with a half note G, a half note A, and a whole note B. The Pno part continues with chords and a bass line. Measure 14 has a piano (*p*) dynamic marking.

The Coventry Carol

2
19

Trb.

Pno

25

Trb.

Pno

31 *mp*

Trb.

Pno *mp*

37

Trb.

Pno

The Coventry Carol

43 *mf*

Trb.

Pno

49

Trb.

Pno

55

Trb.

Pno

61 *f*

Trb.

Pno

The Coventry Carol

4
67

Trb.

Pno

73

Trb.

Pno

79

Trb.

Pno

85

Trb.

Pno

rit.