



Bernard Dewagtere

France, SIN LE NOBLE

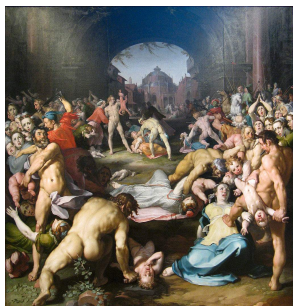
The Coventry Carol (Lullay, Thou little tiny Child) Traditional

A propos de l'artiste

Docteur en musicologie, chef d'orchestre et compositeur.
Compositions et arrangements de toutes époques, dans tous les styles ou genres musicaux et pour n'importe quelles formations instrumentales ou vocales.

Qualification : Docteur en Musicologie
Sociétaire : SACEM - Code IPI artiste : 342990
Page artiste : https://www.free-scores.com/partitions_gratuites_bernard-dewagtere.htm

A propos de la pièce



Titre : The Coventry Carol
[Lullay, Thou little tiny Child]
Compositeur : Traditional
Arrangeur : Dewagtere, Bernard
Droit d'auteur : Copyright © Bernard Dewagtere
Editeur : Dewagtere, Bernard
Instrumentation : Violon et Piano (ou Orgue)
Style : Noel
Commentaire : The Coventry Carol is an English Christmas carol dating from the 16th century. The carol was traditionally performed in Coventry in England as part of a mystery play called The Pageant of the Shearmen and Tailors. The play depicts the Christmas story from chapter two in the Gospel of Matthew: the carol itself refers to the Massacre of the Innocents, in which Herod ordered all male infants under the age of two in Bethlehem to be killed, and take... (la suite en ligne)

Bernard Dewagtere sur [free-scores.com](https://www.free-scores.com)

LICENCE

Cette partition nécessite une autorisation :
- pour les représentations publiques
- pour l'utilisation par les professeurs

S'acquies de cette licence sur :

<https://www.free-scores.com/licence?p=a3Kt0MKhBa>



- écouter l'audio
- partager votre interprétation
- commenter la partition
- s'acquies de la licence
- contacter l'artiste

Interdiction de diffusion sur d'autres sites Web.

The Coventry Carol

Lullay, Thou little tiny Child

Old English Carol (16th Century)

Arr. : Bernard Dewagtere

Violon

Piano

pp

Vln.

Pno

Vln.

Pno

p

The Coventry Carol

2
19

Vln.

Pno

25

Vln.

Pno

31

Vln. *mp*

Pno *mp*

37

Vln.

Pno

The Coventry Carol

43 *mf*

Vln.

Pno

49

Vln.

Pno

55

Vln.

Pno

61 *f*

Vln.

Pno

The Coventry Carol

4
67

Vln.

Pno

Detailed description: This system contains measures 4 to 67. The Violin part (Vln.) is written on a single staff in treble clef, featuring a melodic line with a fermata over the final measure. The Piano part (Pno) is written on two staves (treble and bass clefs) and provides harmonic accompaniment with chords and moving lines. The key signature has one sharp (F#).

73

Vln.

Pno

pp

Detailed description: This system contains measures 73 to 84. The Violin part (Vln.) is written on a single staff in treble clef, with a fermata over the final measure. The Piano part (Pno) is written on two staves (treble and bass clefs) and includes a *pp* (pianissimo) dynamic marking. The key signature changes to two flats (Bb and Eb).

79

Vln.

Pno

Detailed description: This system contains measures 79 to 84. The Violin part (Vln.) is written on a single staff in treble clef and consists of whole rests. The Piano part (Pno) is written on two staves (treble and bass clefs) and continues the accompaniment. The key signature remains two flats (Bb and Eb).

85

Vln.

Pno

rit.

Detailed description: This system contains measures 85 to 90. The Violin part (Vln.) is written on a single staff in treble clef and consists of whole rests. The Piano part (Pno) is written on two staves (treble and bass clefs) and includes a *rit.* (ritardando) marking. The key signature remains two flats (Bb and Eb).