



# Philippe Cornu

Arrangeur, Compositeur

France

## A propos de l'artiste

Musicien amateur, tourné principalement vers la musique baroque, je propose des arrangements / orchestrations (principalement pour orchestres d'Harmonie) pour tenter de faire connaître plus largement des œuvres - par exemple des sonates - d'auteurs probablement peu connus - par exemple Louis Couperin.

**Page artiste :** [https://www.free-scores.com/partitions\\_gratuites\\_phc.htm](https://www.free-scores.com/partitions_gratuites_phc.htm)

## A propos de la pièce

**Titre :** Sonanta 6 (RV 46) - 2 Allegro - A. Vivaldi

**Compositeur :** Vivaldi, Antonio

**Arrangeur :** Cornu, Philippe

**Droit d'auteur :** Copyright © Philippe Cornu

**Editeur :** Cornu, Philippe

**Instrumentation :** Sextuor

**Style :** Baroque

**Commentaire :** Cet Allegro de la sonate n° 6 en si bémol majeur (à l'origine pour violoncelle) d'Antonio Vivaldi (RV 46), arrangement fait à partir de l'édition parisienne d'origine ("VI SONATES Violoncello Solo col Basso da D'ANTONIO VIUALDI"), est ici pour flûte et clarinette. Il fait suite au Largo de la même sonate, mis en ligne le 22 décembre 2019.

Philippe Cornu sur [free-scores.com](https://www.free-scores.com)



Cette partition ne fait pas partie du domaine public. Merci de contacter l'artiste pour toute utilisation hors du cadre privé.

**Interdiction de diffusion sur d'autres sites Web.**



- écouter l'audio
- partager votre interprétation
- commenter la partition
- contacter l'artiste

# Sonate 6 (RV 46) - 2 Allegro

Arr. : Philippe Cornu (2020)

Antonio Vivaldi (1678 - 1741)

$\text{♩} = 70$

Flûte  
*mf*

Clarinette en Sib  
*mp*

Saxophone Alto  
*pp*

Saxophone Ténor  
*pp*

Saxophone Baryton  
*pp*

Clarinette Basse  
*p*

3  
Fl.  
*p*

Clar. Sib

Sax. A.

Sax. T.

Sax. Bar.

Cl. basse  
*p*

6

Fl.

Clar. Sib

Sax. A.

Sax. T.

Sax. Bar.

Cl. basse

Detailed description: This system contains measures 6 and 7 of a musical score. The Flute part has whole rests. The Clarinet in B-flat part has a melodic line with eighth and sixteenth notes. The Alto Saxophone part has a simple harmonic line. The Tenor Saxophone part has a line starting with a grace note. The Baritone Saxophone part has a line of quarter notes. The Bass Clarinet part has a line of quarter notes.

8

Fl.

Clar. Sib

Sax. A.

Sax. T.

Sax. Bar.

Cl. basse

Detailed description: This system contains measures 8 and 9. The Flute part has whole rests. The Clarinet in B-flat part has a melodic line with eighth and sixteenth notes. The Alto Saxophone part has a line of half notes. The Tenor Saxophone part has a line of half notes with a slur. The Baritone Saxophone part has a line of half notes. The Bass Clarinet part has a line of quarter notes.

10

Fl.

Clar. Sib

Sax. A.

Sax. T.

Sax. Bar.

Cl. basse

Detailed description: This block contains the musical notation for measures 10 and 11. The Flute part (Fl.) is mostly silent, indicated by a whole rest. The Clarinet in B-flat (Clar. Sib) plays a complex eighth-note pattern. The Saxophone Alto (Sax. A.), Tenor (Sax. T.), and Baritone (Sax. Bar.) parts play a simple eighth-note line. The Bass Clarinet (Cl. basse) plays a descending eighth-note line. All parts are in a key signature of two flats (B-flat major or D-flat minor).

12

Fl.

Clar. Sib

Sax. A.

Sax. T.

Sax. Bar.

Cl. basse

Detailed description: This block contains the musical notation for measures 12 and 13. The Flute part (Fl.) has a rest in measure 12 and then enters in measure 13 with a melodic line. The Clarinet in B-flat (Clar. Sib) has a rest in measure 12 and then enters in measure 13 with a melodic line. The Saxophone Alto (Sax. A.), Tenor (Sax. T.), and Baritone (Sax. Bar.) parts play a simple eighth-note line. The Bass Clarinet (Cl. basse) plays a descending eighth-note line. All parts are in a key signature of two flats (B-flat major or D-flat minor).

16

Fl.

Clar. Sib

Sax. A.

Sax. T.

Sax. Bar.

Cl. basse

Detailed description: This system of music covers measures 16, 17, and 18. The Flute (Fl.) part is active in measures 16 and 17, playing a melodic line with eighth and sixteenth notes, and rests in measure 18. The Clarinet in B-flat (Clar. Sib) is silent in measures 16 and 17, then enters in measure 18 with a melodic phrase. The Saxophone Alto (Sax. A.) plays a melodic line with a slur over measures 16 and 17. The Saxophone Tenor (Sax. T.) plays a melodic line with a slur over measures 16 and 17. The Saxophone Baritone (Sax. Bar.) plays a bass line with eighth notes. The Clarinet in C (Cl. basse) plays a bass line with eighth notes. The key signature has two flats (B-flat and E-flat), and the time signature is 4/4.

19

Fl.

Clar. Sib

Sax. A.

Sax. T.

Sax. Bar.

Cl. basse

Detailed description: This system of music covers measures 19, 20, and 21. The Flute (Fl.) is silent in measures 19 and 20, then enters in measure 21 with a melodic phrase. The Clarinet in B-flat (Clar. Sib) plays a melodic line with eighth notes in measures 19 and 20, then rests in measure 21. The Saxophone Alto (Sax. A.) plays a melodic line with eighth notes. The Saxophone Tenor (Sax. T.) plays a melodic line with eighth notes. The Saxophone Baritone (Sax. Bar.) plays a bass line with eighth notes. The Clarinet in C (Cl. basse) plays a bass line with eighth notes. The key signature has two flats (B-flat and E-flat), and the time signature is 4/4.

22

Fl.

Clar. Sib

Sax. A.

Sax. T.

Sax. Bar.

Cl. basse

25

Fl.

Clar. Sib

Sax. A.

Sax. T.

Sax. Bar.

Cl. basse

28

Fl.

Clar. Sib

Sax. A.

Sax. T.

Sax. Bar.

Cl. basse

31

Fl.

Clar. Sib

Sax. A.

Sax. T.

Sax. Bar.

Cl. basse

Fl.  
Clar. Sib  
Sax. A.  
Sax. T.  
Sax. Bar.  
Cl. basse

The image shows a musical score for six instruments: Flute (Fl.), Clarinet in Bb (Clar. Sib), Saxophone Alto (Sax. A.), Saxophone Tenor (Sax. T.), Saxophone Baritone (Sax. Bar.), and Clarinet in Bb (Cl. basse). The score is written in a key signature of two flats (Bb) and a common time signature (C). The Flute part starts with a rest in the first measure, followed by a melodic line. The Clarinet in Bb part has a more active, rhythmic line. The Saxophone parts (Alto, Tenor, Baritone) and the Clarinet in Bb part (bottom) have similar rhythmic patterns, often starting with a rest in the first measure. The score ends with a double bar line and repeat dots. There are some markings like '8' and '7' below the staves, possibly indicating fingerings or breath marks.



Flûte

# Sonate 6 (RV 46) - 2 Allegro

Arr. : Philippe Cornu (2020)

Antonio Vivaldi (1678 - 1741)

$\text{♩} = 70$

6

*mf*

12

18

2

25

30



Saxo A

# Sonate 6 (RV 46) - 2 Allegro

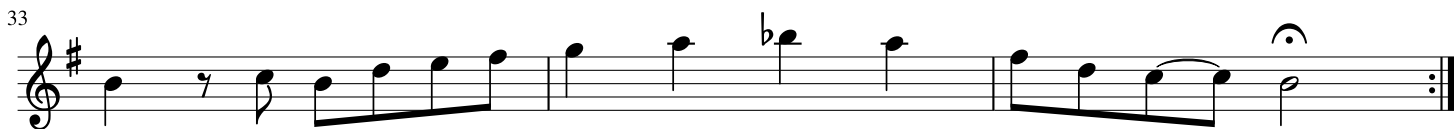
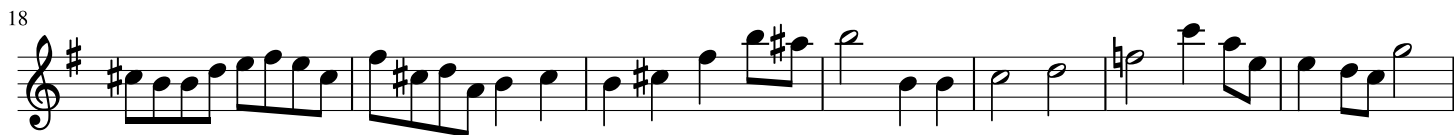
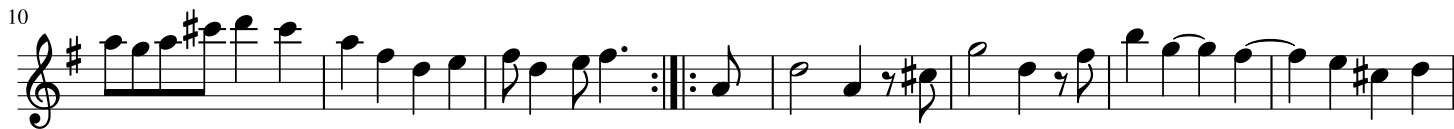
Arr. : Philippe Cornu (2020)

Antonio Vivaldi (1678 - 1741)

♩ = 70



*pp*



Saxo T

# Sonate 6 (RV 46) - 2 Allegro

Arr. : Philippe Cornu (2020)

Antonio Vivaldi (1678 - 1741)

$\text{♩} = 70$



Musical staff 1, starting with a treble clef and a common time signature (C). The music begins with a piano (*pp*) dynamic marking. The first measure contains a quarter rest followed by a quarter note G4. The melody continues with eighth and quarter notes, ending with a half note G4.

10



Musical staff 2, starting at measure 10. It features a sequence of eighth notes with a sharp sign, followed by a repeat sign. The melody continues with quarter and eighth notes.

18



Musical staff 3, starting at measure 18. The melody consists of eighth notes with sharp signs, followed by quarter notes and a half note.

25



Musical staff 4, starting at measure 25. The melody includes quarter notes, eighth notes, and a half note, ending with a quarter rest.

33



Musical staff 5, starting at measure 33. The melody features quarter notes, eighth notes, and a half note with a fermata, ending with a double bar line and repeat sign.

Saxo B

# Sonate 6 (RV 46) - 2 Allegro

Arr. : Philippe Cornu (2020)

Antonio Vivaldi (1678 - 1741)

♩ = 70

*pp*

10

18

25

33

# Clarinete Basse Sonate 6 (RV 46) - 2 Allegro

Arr. : Philippe Cornu (2020)

Antonio Vivaldi (1678 - 1741)

$\text{♩} = 70$

