



# Philippe Cornu

Arrangeur, Compositeur

France

## A propos de l'artiste

Musicien amateur, tourné principalement vers la musique baroque, je propose des arrangements / orchestrations (principalement pour orchestres d'Harmonie) pour tenter de faire connaître plus largement des œuvres - par exemple des sonates - d'auteurs probablement peu connus - par exemple Louis Couperin.

**Page artiste :** [http://www.free-scores.com/partitions\\_gratuites\\_phc.htm](http://www.free-scores.com/partitions_gratuites_phc.htm)

## A propos de la pièce

<b>Titre :</b>	Sonate n° 5 - 3 Largo [RV 40]
<b>Compositeur :</b>	Vivaldi, Antonio
<b>Arrangeur :</b>	Cornu, Philippe
<b>Droit d'auteur :</b>	Copyright © Philippe Cornu
<b>Editeur :</b>	Cornu, Philippe
<b>Instrumentation :</b>	Sextuor
<b>Style :</b>	Baroque
<b>Commentaire :</b>	Est proposé ici le second Largo de la sonate n° 5 (à l'origine pour violoncelle) d'Antonio Vivaldi (RV 40), arrangement fait à partir de l'édition parisienne d'origine ("VI SONATES Violoncello Solo col Basso da D'ANTONIO VIUALDI (sic)").

Philippe Cornu sur [free-scores.com](http://free-scores.com)



Cette partition ne fait pas partie du domaine public. Merci de contacter l'artiste pour toute utilisation hors du cadre privé.

**Interdiction de diffusion sur d'autres sites Web.**



- écouter l'audio
- partager votre interprétation
- commenter la partition
- contacter l'artiste

# Sonate n° 5 (RV 40) - 3 Largo

Arr. : Philippe Cornu (2020)

Antonio Vivaldi (1678 - 1741)

$\text{♩} = 45$

The image displays a musical score for the third movement of Vivaldi's Sonata No. 5 (RV 40), arranged by Philippe Cornu in 2020. The score is written for a woodwind ensemble and is set in 12/8 time with a tempo of 45 beats per minute. The key signature is one sharp (F#). The score is divided into two systems. The first system includes parts for Flute, Clarinet in Bb, Saxophone Alto, Saxophone Tenor, Saxophone Baritone, and Clarinet Bass. The second system includes parts for Flute, Clarinet in Bb, Saxophone Alto, Saxophone Tenor, Saxophone Baritone, and Clarinet Bass. The Flute and Clarinet in Bb parts feature a melodic line with eighth-note patterns and slurs. The Saxophone parts provide harmonic support with sustained notes and rests. The Clarinet Bass part has a steady eighth-note accompaniment. Dynamics include *p* (piano) and *pp* (pianissimo). The score concludes with a double bar line and repeat signs.

6

Fl.

Clar. Sib

Sax. A.

Sax. T.

Sax. Bar.

Cl. basse

Detailed description: This block contains the musical notation for measures 6 and 7. It features six staves for different instruments: Flute (Fl.), Clarinet in B-flat (Clar. Sib), Saxophone Alto (Sax. A.), Saxophone Tenor (Sax. T.), Saxophone Baritone (Sax. Bar.), and Bass Clarinet (Cl. basse). The key signature is one sharp (F#). The Flute and Clarinet in B-flat parts play a melodic line with eighth and sixteenth notes. The Saxophone Alto, Tenor, and Baritone parts play a rhythmic accompaniment with dotted eighth notes and sixteenth notes. The Bass Clarinet part plays a steady eighth-note accompaniment. Measure 6 starts with a repeat sign and a first ending bracket. Measure 7 continues the melodic and rhythmic patterns.

8

Fl.

Clar. Sib

Sax. A.

Sax. T.

Sax. Bar.

Cl. basse

Detailed description: This block contains the musical notation for measures 8 and 9. It features the same six staves as the previous block. The key signature remains one sharp (F#). In measure 8, the Flute and Clarinet in B-flat parts play a more complex melodic line with sixteenth-note runs. The Saxophone Alto, Tenor, and Baritone parts continue their rhythmic accompaniment. The Bass Clarinet part continues its eighth-note accompaniment. Measure 9 concludes the section with a final melodic flourish in the Flute and Clarinet parts.

Fl.  
Clar. Sib  
Sax. A.  
Sax. T.  
Sax. Bar.  
Cl. basse

The image shows a musical score for six woodwind instruments: Flute (Fl.), Clarinet in Bb (Clar. Sib), Saxophone Alto (Sax. A.), Saxophone Tenor (Sax. T.), Saxophone Baritone (Sax. Bar.), and Clarinet Bass (Cl. basse). The score is written in treble clef for the Flute, Clarinet in Bb, Saxophone Alto, and Clarinet Bass, and in bass clef for the Saxophone Tenor and Saxophone Baritone. The key signature is one sharp (F#). The Flute and Clarinet in Bb parts feature a melodic line with a dotted quarter note followed by an eighth note, then a quarter note, and a half note. The Saxophone Alto and Tenor parts have a whole rest followed by a quarter note, and the Saxophone Baritone part has a whole rest followed by a quarter note. The Clarinet Bass part has a quarter note, a half note, and a quarter note. The score ends with a double bar line and repeat dots.

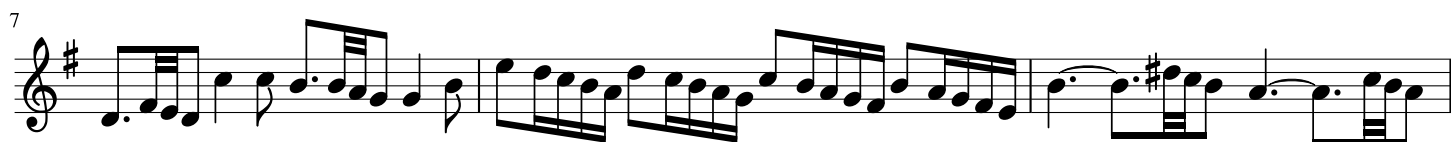
Flûte

# Sonate n° 5 (RV 40) - 3 Largo

Arr. : Philippe Cornu (2020)

Antonio Vivaldi (1678 - 1741)

♩ = 45



Clarinete

Sonate n° 5 (RV 40) - 3 Largo

Arr. : Philippe Cornu (2020)

Antonio Vivaldi (1678 - 1741)

♩ = 45

1

*p*

Measures 1-3 of the score. The first measure starts with a treble clef, a key signature of one sharp (F#), and a 12/8 time signature. The music begins with a piano (*p*) dynamic. The notation consists of eighth and sixteenth notes with stems pointing down.

4

Measures 4-6. Measure 4 includes a fermata over a note. Measure 5 features a repeat sign. Measure 6 ends with a double bar line.

7

Measures 7-9. Measure 7 contains a fermata. Measures 8 and 9 feature a series of sixteenth-note runs.

10

Measure 10. The measure concludes with a fermata and a double bar line.

Saxo Alto

# Sonate n° 5 (RV 40) - 3 Largo

Arr. : Philippe Cornu (2020)

Antonio Vivaldi (1678 - 1741)

♩ = 45



Saxo Ténor

# Sonate n° 5 (RV 40) - 3 Largo

Arr. : Philippe Cornu (2020)

Antonio Vivaldi (1678 - 1741)

♩ = 45

The first staff of music is written in treble clef with a key signature of one sharp (F#) and a time signature of 12/8. It begins with a piano (*pp*) dynamic marking. The notation includes eighth and quarter notes, rests, and a fermata over the final note. A small '8' is written below the first measure.

The second staff of music is written in treble clef with a key signature of one sharp (F#) and a time signature of 12/8. It begins with a repeat sign. The notation includes eighth and quarter notes, rests, and a fermata over the final note. A small '6' is written above the first measure.



# Saxo baryton      Sonate n° 5 (RV 40) - 3 Largo

Arr. : Philippe Cornu (2020)

Antonio Vivaldi (1678 - 1741)

♩ = 45

The first staff of music is in bass clef with a key signature of one sharp (F#) and a time signature of 12/8. It begins with a *pp* dynamic marking. The melody consists of eighth and quarter notes, with a repeat sign and a fermata over the final note of the first phrase.

7

The second staff of music continues the melody from the first staff, starting at measure 7. It features a series of eighth notes and quarter notes, ending with a fermata over the final note.

# Clarinete basse Sonate n° 5 (RV 40) - 3 Largo

Arr. : Philippe Cornu (2020)

Antonio Vivaldi (1678 - 1741)

♩ = 45

